



Lakehaven
WATER & SEWER DISTRICT

Federal Way, Washington

WASTEWATER ENGINEER
\$136,364 - \$187,865 DOQ

Plus Excellent Benefits

Apply by

February 2, 2025

(Applications Reviewed as Submitted, Open Until Filled)

PROTHMAN



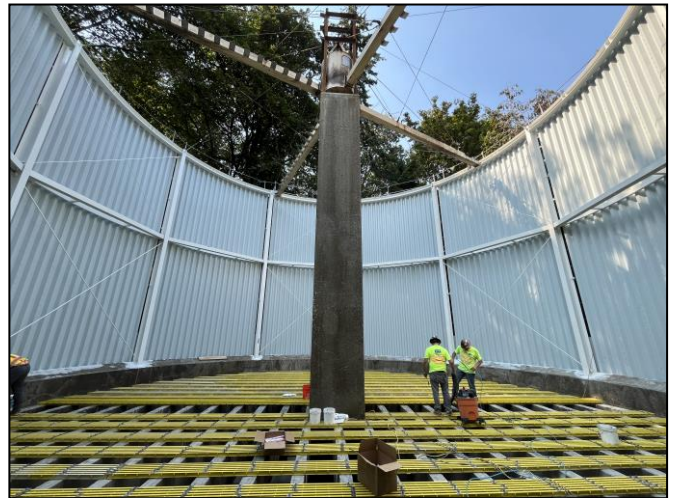
THE REGION



Nestled along the shores of Puget Sound and ideally located between Seattle and Tacoma, Lakehaven Water & Sewer District is headquartered in the City of Federal Way, Washington. Since its incorporation in 1990, the City has focused on important community projects such as downtown revitalization, transportation system improvements, new parks, and new community facilities for the performing arts. With a population of over 100,000, Federal Way is located within a 30-minute drive from both Seattle and Tacoma. Bordered on its west side by the magnificent Puget Sound, with the Olympic and Cascade Mountain Ranges in close proximity, Federal Way offers spectacular views and year-round recreational opportunities.

The community’s commitment to active and passive recreation is evident in the many parks and trails. Celebration Park is recognized as one of the premier facilities for soccer and softball on the West Coast. The Weyerhaeuser/King County Aquatic Center is home to many national and international swimming and diving competitions. In addition, a trail system extends throughout the community, providing outdoor activity and education of the natural habitats.

The community’s rich cultural and recreational offerings include an award-winning theatre group, a professional symphony orchestra, two dance troupes, male and female choruses and quartets. Wild Waves and Enchanted Village, the premier amusement and water park of the region, has over 60 acres of water slides and roller coasters. Dash Point State Park is a popular destination for recreation. This 398-acre camping park features 3,301 feet of saltwater shoreline, and the beach provides unobstructed views of the Puget Sound and opportunities to swim, fish, sail, kayak, picnic, and enjoy marine life.



THE DISTRICT

Lakehaven Water & Sewer District encompasses an area of approximately 35 square miles with a service population of approximately 135,000 people. The District has 5 commissioners who are elected at large and serve staggered 6-year terms. The District is primarily residential in character with approximately 75% of the land area devoted to single family dwellings.

The District’s northern boundary extends to Saltwater State Park in Des Moines, the southern boundary overlaps slightly with the Pierce County line, the western boundary follows the Puget Sound shoreline and the eastern boundary overlaps slightly with the southern limits of Kent, the western city limits of Auburn, Pacific, and Algona. The District provides service within most of the City of Federal Way and small portions of the cities of Des Moines, Kent, Auburn, Pacific, Tacoma, Edgewood, and Milton. In addition, the District serves an unincorporated area of King County in between the City of Federal Way and eastern cities, along with a small portion of unincorporated Pierce County to the south.

The District has, under one name or another, provided service to the Federal Way area for more than 60 years. The sewer system includes 350 miles of mainline, 33 pump stations and 2 secondary wastewater treatment plants. The Lakota Wastewater Treatment Plant is a Class III, 10.0 MGD activated sludge facility that treats the domestic wastewater collected within the utility’s service area, removing pollutants, and disinfecting harmful organisms prior to discharge into Puget Sound.



The Redondo Wastewater Treatment Plant is a Class II, 5.6 MGD secondary treatment plant process using trickling filter biotowers, ultimately discharging effluent approximately 400 feet below mean sea level.

The water system includes 450 miles of mainline, 25 wells and 12 storage tanks with an approximate storage capacity of 31 million gallons. The average daily pumping rate is about 10 million gallons per day (MGD).

THE POSITION

Reporting to the Engineering Manager, the Wastewater Engineer is responsible for coordination, administration, planning, review and development of engineering designs, plans, and specifications of assigned public works projects relating to both wastewater treatment and sewer collection systems and operations. This position will be responsible for overseeing the activities associated with new wastewater treatment and sewer service projects for the District, and supervises, directs, assigns, coordinates, and reviews the work of assigned technical staff. This position also provides management with information related to the performance of the technical staff, troubleshoots professional engineering problems in conjunction with the review of capital improvements projects, and coordinates as needed with other departments, managing consulting contracts for engineering and construction management services.

To view the job description and all responsibilities, please view the attachments found [here](#).

EDUCATION & EXPERIENCE

- Graduation from an accredited college or university with a Bachelor of Science Degree in Civil or Sanitary Engineering.
- Must possess a current Professional Civil Engineering license issued by the State of Washington. Preference may be given to applicants with a Master's degree in a related field, or additional Engineering License endorsements.
- Six (6) years of increasingly responsible civil engineering experience in the principles and practices of design, administration and management of a municipal public works operation, preferably in the water and/or sewer utility areas.
- Supervisory experience is desirable.
- A valid Washington State Driver's License.

Necessary Knowledge, Skills, and Abilities:

- Ability to make decisions concerning work assignments, staffing priorities, objectives, and operational procedures.
- Ability to make effective presentations on complex subjects at public meetings, including Board of Commissioners meetings and at various other meetings throughout the community.
- Ability to interact positively and effectively with diverse individuals within and outside the organization to accomplish common goals.
- Demonstrable working knowledge of monitoring operating and capital budgets.
- Advanced analytical skills to assess trends and develop strategies for action.
- Excellent oral and written communication skills, including the ability to write technical reports.
- Proactive problem-solving skills and the ability to enhance creative talents of subordinates.
- Ability to deal tactfully and courteously with the public and other employees.
- Thorough understanding and working knowledge of modern management techniques and principles.
- Skills associated with drafting (AutoCAD preferred).
- Knowledge of principles and practices of wastewater treatment facilities and collection systems.
- Ability to prepare engineering data and materials for NPDES and other environmental permits and applications for wastewater and sewer collection systems.

COMPENSATION & BENEFITS

- **\$136,364 - \$187,865 DOQ**
- Full State of Washington Department of Retirement Systems PERS Plans.
- State of Washington Department of Retirement Systems Deferred Compensation program.
- State of Washington Health Care Authority's Medical, Dental, Vision benefit programs, life insurance and long-term disability insurance.
- Employer paid membership in an Employee Assistance Program.
- Employer contribution of \$150/month to a HRA VEBA account.
- Vacation leave based on years of service.
- Sick leave accrued at 8 hours/month.
- 12 paid holidays, plus 1 floating holiday.
- 16 hours of unpaid Religious/Faith/Conscience Holidays.
- Non-represented employees to receive COLA increase (up to 4% max) on 1/1/2025, with difference between 0-7% merit increase potential and 1/1/2025 COLA as Merit increase awarded in anniversary month.



**For more information on the
Lakehaven Water & Sewer District,
please visit:**

www.lakehaven.org

To view the full benefits summary, please view the attachment found [here](#).

Lakehaven Water & Sewer District is an Equal Opportunity Employer. All qualified candidates are strongly encouraged to apply by **February 2, 2025** (applications reviewed as submitted, open until filled). To **apply online**, go to **www.prothman.com** and click on "Open Recruitments" followed by the "**Wastewater Engineer – Lakehaven Water & Sewer District, WA**" option, and follow the directions provided, or click [here](#).

PROTHMAN

www.prothman.com

206.368.0050